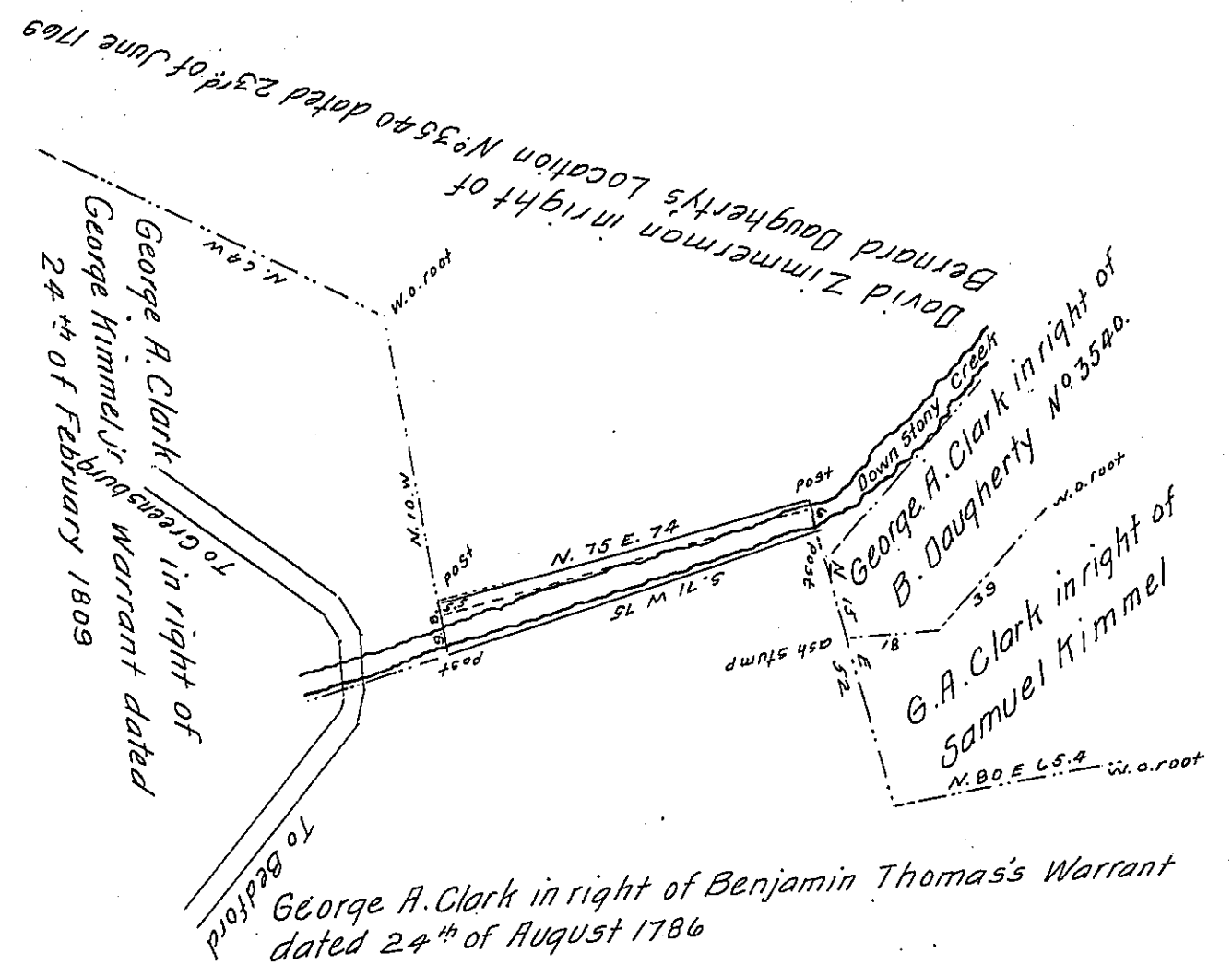


FORM No. 1.



N.B. David Zimmerman Caveats the acceptance of this survey as to that part included in the dotted lines on the North Side of the Creek which he claims to have been included in the B. Daugherty Survey.

R. Forward D.S.

Situate in Quemahoning Township Somerset County. Containing three and one half acres and allowance and Surveyed the 9th day of May 1850 by H. L. Holbrook in pursuance of a Warrant granted to George A. Clark bearing date the 2nd day of May 1850. Certified June 1st 1850.

Pt. Ross Forward

D.S.

IN TESTIMONY that the above is a copy of the original remaining on file in the Department of Internal Affairs of Pennsylvania, made conformably to an Act of Assembly approved the 16th day of February 1833, I have hereunto set my hand and caused the Seal of said Department to be affixed at Harrisburg, this twenty third day of January 1908.

*Henry Howick*  
Secretary of Internal Affairs.